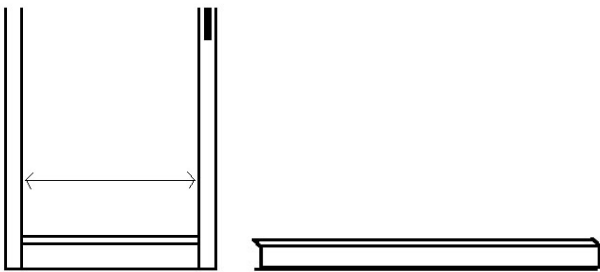


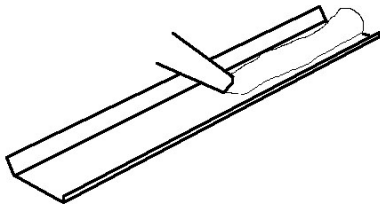


## Installation guide for patio doors with narrow sill

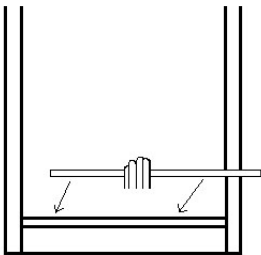
1. Measure the top and bottom width and cut the BondKap™ BK 2002 square at each end.



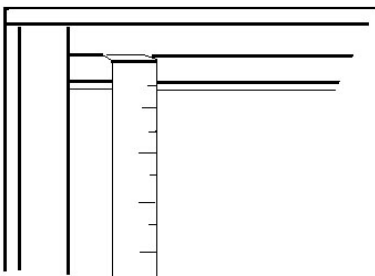
2. Apply a medium bead of sealant the length of the BondKap™.



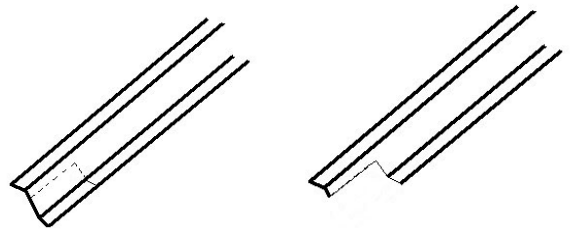
3. Place the BondKap™ on the patio door.



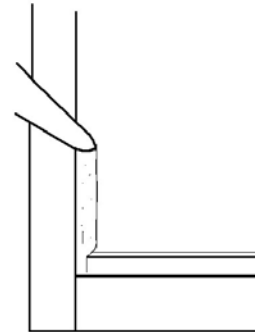
4. Measure the height from tip to tip of the already installed BondKap™.



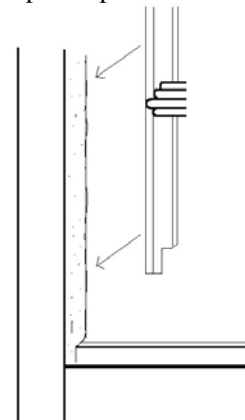
5. Using BondKap™ BK 2003, square cut the ends and cut a notch to fit over the existing BondKap™.



6. Apply a triangular bead of sealant to patio door. Remember to apply enough material to adhere both the frame and film.



7. Install BondKap™ to patio door.



8. Clean off any excess with a plastic razor and cleaner.

 **FilmFastener LLC**  
Featuring *BondKap™*

security film  
anchoring system  
*patent pending*

813.926.8721

## Installation guide for patio doors with narrow sill

